
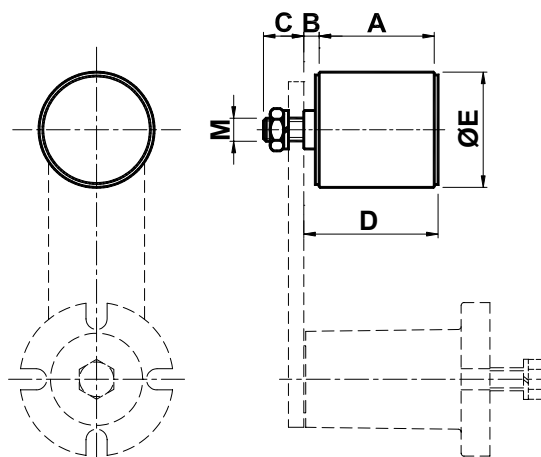


Accessori tipo XDP / XDP accessories

Rullo **XDP** in materiale plastico montato su cuscinetti autolubrificati ideale per il tensionamento di cinghie. Le temperature di esercizio devono essere $\leq 70^{\circ}\text{C}$. I kit vengono forniti con viteria in acciaio inox.

XDP plastic roller installed on self-lubricating bearings, suitable to tension the belts. The operating temperatures must be $\leq 70^{\circ}\text{C}$. The kits are delivered with stainless steel bolts and screws.


Tipo Type	Cod. n°	Size 	Size						Peso Weight [Kg]
			A	B	C	D	E	M	
XDP 30	CE071380	10	35	3	13	40	30	M 8	0.08
XDP 40	CE071382	20-30	45	6	16	53	40	M10	0.18
XDP 60	CE071384	40	60	8	21	70	60	M12	0.40



Accessori tipo XDA / XDA accessories

Rullo **XDA** in acciaio inox montato su cuscinetti autolubrificati ideale per il tensionamento di cinghie. Le temperature di esercizio devono essere $\leq 100^{\circ}\text{C}$. I kit vengono forniti con viteria in acciaio inox.

XDA stainless steel roller installed on self-lubricating bearings, suitable to tension the belts. The operating temperatures must be $\leq 100^{\circ}\text{C}$. The kits are delivered with stainless steel bolts and screws.

Tipo Type	Cod. n°	Size 	Size						Peso Weight [Kg]
			A	B	C	D	E	M	
XDA 30	CE071400	10	35	3	13	40	30	M 8	0.16
XDA 40	CE071402	20-30	45	6	16	53	40	M10	0.37
XDA 60	CE071404	40	60	8	21	72	60	M16	0.85

