
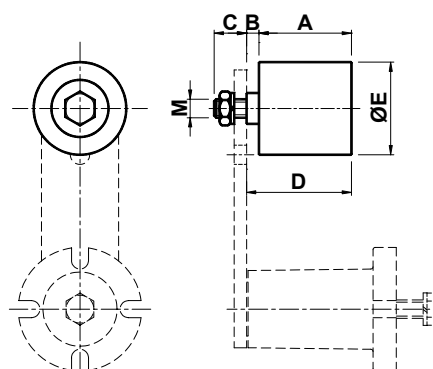


Accessori tipo DP / DP type accessories

Rullo **DP** in materiale plastico montato su cuscinetti autolubrificati ideale per il tensionamento di cinghie. Le temperature di esercizio devono essere $\leq 70^{\circ}\text{C}$. I kit vengono forniti con viteria in acciaio zincato.

DP plastic roller installed on self-lubricating bearings, suitable to tension the belts. The operating temperatures must be $\leq 70^{\circ}\text{C}$. The kits are delivered with galvanized bolts and screws.


Tipo Type	Cod. n°	Size 	A	B	C	D	ØE	M	Peso
									Weight [Kg]
DP 30	CE070300	111	35	3	13	38	30	M 8	0.08
DP 40	CE070302	215-318	45	6	16	51	40	M10	0.18
DP 60	CE070304	427	60	8	21	68	60	M12	0.40
DP 80	CE070306	538	90	9	28	99	80	M20	1.20
DP 90	CE070308	645	135	7	27	142	90	M20	1.70



Accessori tipo DA / DA type accessories

Rullo **DA** in acciaio zincato montato su cuscinetti autolubrificati ideale per il tensionamento di cinghie. Le temperature di esercizio devono essere $\leq 100^{\circ}\text{C}$. I kit vengono forniti con viteria in acciaio zincato.

DA galvanized steel roller installed on self-lubricating bearings, suitable to tension the belts. The operating temperatures must be $\leq 100^{\circ}\text{C}$. The kits are delivered with galvanized bolts and screws.

Tipo Type	Cod. n°	Size 	A	B	C	D	ØE	M	Peso
									Weight [Kg]
DA 30	CE070285	111	35	3	13	38	30	M 8	0.16
DA 40	CE070287	215-318	45	6	16	51	40	M10	0.37
DA 60	CE070289	427	60	8	21	68	60	M16	0.85
DA 80	CE070291	538	90	9	28	99	80	M20	2.09
DA 90	CE070293	645	135	7	27	142	90	M20	2.44

